




# **DiSPLAY**

PROTECTING THE FUTURE

**MULTI-PURPOSE  
VIDEO MONITORS  
LAND / MARINE / AIR**



# CONTENT

	<b>ABOUT THE COMPANY</b>		1
	<b>ASPECT RATIO 4:3</b>	VMCM-21.5.1	2
		VMC-26.2	3
		VMCM-21.8 /21.8.1	4
		VMCM-21.7	5
		VMC-21M	6
		VMCM-21.3 /21.3.1 /21.2.1	7
		VMC-26.1	8
		VMC-38 /38.2 /38.3 /38.4	9
		VMC-38C	10
		VMC-45 /45.2 /45.4 /45.5	11
		VMC-51 /51.2 /51.3 /51.4	12
		VMC-51.3 /51.4 TT	13
		VMC-51 /51.2 /51.2.1M	14
	<b>ASPECT RATIO 16:9</b>	VMC-17 /17.3	15
		VMC-22.3	16
		VMC-31 /31.3	17
		VMC-39 /39.2 /39.3 /39.4	18
		VMC-48 /48.2	19
		VMC-61 /61.2	20
		VMC-61.3	21
		VMC-61.4	22
		VMC-61.2 TT	23
		VMC-68.2 /68.2.1 /68.2.2	24
		VMC-81.2 /81.2.1 /81.2.2	25
		VMC-81.3	26
		VMC-81.4.1	27
		VMC-101	28
		VMC-140.2 /140.4	29
		VMC-165.2	30
		VMC-190.2	31
		VMC-250	32
		VMC-250 TT	33
	<b>UNCASED</b>	VMCM-16	34
	<b>OTHER PRODUCTS</b>	BT-33-110	35
		CONTROLLER BOARD VK-26 / KI-07P	36

FOR MORE THAN 35 YEARS «DISPLAY» DESIGN OFFICE», JSC, HAS BEEN SPECIALIZING IN ENGINEERING AND MANUFACTURE OF DISPLAY DEVICES DESIGNED FOR OPERATION IN SEVERE CONDITIONS AND IS CONSIDERED TO BE ONE OF THE MARKET LEADERS IN THIS INDUSTRY.

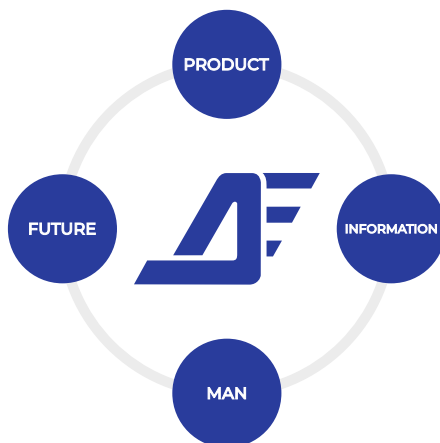
### COMPANY PROFILE:

- DESIGN AND PRODUCTION OF RUGGED VIDEO MONITORS;
- DESIGN AND PRODUCTION OF RUGGED PANEL AND LAPTOP COMPUTERS;
- DESIGN AND PRODUCTION OF AVIONIC DISPLAYS;
- DESIGN AND PRODUCTION OF MICRO DISPLAY SYSTEMS;
- LCD RUGGEDIZATION.

### OUR PRODUCTS OPERATE SUSTAINABLY IN THE FOLLOWING CONDITIONS:

- LOW TEMPERATURES, -55 °C;
- HIGH TEMPERATURES, до +70 °C;
- 100% HUMIDITY, FOG, SPATTER, RAIN;
- AGGRESSIVE ENVIRONMENT INFLUENCE, SALT SPRAY FOG, FUNGI, SAND;
- VIBRATION UP TO 6 g;
- SINGLE SHOCKS UP TO 500 g;
- HIGH AMBIENT ILLUMINATION (UP TO 100,000 Lux).

DESIGNING OUR PRODUCTS FOR OPERATION IN SEVERE CONDITIONS WE PROTECT THEM FROM ENVIRONMENTAL EXPOSURE. BY THAT WE PROTECT THE DISPLAYED INFORMATION AND THE PEOPLE WHO RECEIVE THE INFORMATION. PROTECTING THE PERSON, GIVING THE CHANCE TO IT TO MORE OPERATIVELY CORRECT DECISIONS, ON THE BASIS OF THE RECEIVED INFORMATION, **WE PROTECT THE FUTURE.**



BEING AWARE OF ALL THE RESPONSIBILITY, IN OUR ACTIVITY WE ARE GUIDED BY THE FOLLOWING PRINCIPLES:

- PERSONAL APPROACH TO EVERY CUSTOMER.
- UNIQUE TECHNOLOGIES, DEVELOPED BY OUR HIGHLY SKILLED SPECIALISTS.
- RESPONSIBILITY FOR MANUFACTURED PRODUCTS.

**OUR KEY COMPETENCE:  
HIGH PRODUCTS CUSTOMIZATION TO APPLICATION ENVIRONMENT.**

«DISPLAY» DESIGN OFFICE», JSC, IS OPEN FOR COOPERATION, PARTICIPATION IN NEW PROJECTS. R&D WORK IS ALWAYS OF GREAT INTEREST TO OUR COMPANY.



ENGINEERING AND MANUFACTURING OF MULTI-PURPOSE VIDEO MONITORS IS ONE OF THE KEY FOCUS AREAS OF DESIGN OFFICE.

NOWADAYS, "DISPLAY" MANUFACTURES OVER 90 TYPES OF LCD VIDEO MONITORS WITH SCREEN SIZE FROM 6.5" UP TO 98".

ALL VIDEO MONITORS CAN BE CUSTOMIZED BY ADDING COMPLEMENTARY OPTIONS.

**CUSTOMIZED OPTIONS ARE PROVIDED UPON REQUEST**



# VMCM-21.5.1

6,5" VIDEO MONITOR IS DESIGNED FOR VIDEO INFORMATION DISPLAY VIA ANALOG VGA INPUT. THEY ARE USED IN HARSH ENVIRONMENTS, ONSHORE AND OFFSHORE FACILITIES.



MODEL	VMCM-21.5.1
MOUNTING OPTION	DAMPERS
DISPLAY SIZE, (INCH)	6,5"
RESOLUTION	640x480
VIEWING ANGLE, °	
HORIZONTAL	±70
VERTICAL	±70
CONTRAST	300:1
BRIGHTNESS, cd/m <sup>2</sup>	400
TOUCH SCREEN	(OPTIONAL)
INTERFACE	VGA
POWER SUPPLY, V	+27
POWER CONSUMPTION, W	12
DIMENSIONS, mm:	
WIDTH	190
HEIGHT	165
DEPTH	96
WEIGHT, kg	3
TEMPERATURE, °C:	
OPERATING	-40...+55
STORAGE	-50...+70
HUMIDITY	98%, 35 °C
VIBRATION	1...500 Hz, 6g
SHOCKS:	
SINGLE	150g
REPEATED	15g





## VMC-26.2

THE VIDEO MONITOR IS DESIGNED FOR DISPLAYING OF INFORMATION ON THE SCREEN, AS WELL AS FOR FORMING AND DISPLAYING THE AIMING MARK. IT ENSURES SAFE OPERATION UNDER THE INFLUENCE OF SINUSOIDAL VIBRATION OF **5g**, AS WELL AS MECHANICAL SHOCK OF **500g** WITH THE DURATION OF **0,5...2 ms** WITHOUT THE USE OF SHOCK ABSORBERS.



MODEL	VMC-26.2
MOUNTING OPTION	FLANGE
DISPLAY SIZE, (INCH)	6,5"
RESOLUTION	1024x768
VIEWING ANGLE, °	
HORIZONTAL	±70
VERTICAL	±60
CONTRAST	300:1
BRIGHTNESS, cd/m <sup>2</sup>	550
TOUCH SCREEN	(OPTIONAL)
INTERFACE	RS-485, COMPOSITE VIDEO (MONOCHROME TV SIGNAL)
POWER SUPPLY, V	+27
POWER CONSUMPTION, W	10
DIMENSIONS, mm:	
WIDTH	161
HEIGHT	136
DEPTH	73
WEIGHT, kg	1,5
TEMPERATURE, °C:	
OPERATING	-50...+60
STORAGE	-65...+70
HUMIDITY	98%, 25 °C
VIBRATION	1...500 Hz, 5g
SHOCKS:	
SINGLE	500g
REPEATED	15g

CUSTOMIZED OPTIONS ARE PROVIDED UPON REQUEST



# VMCM-21.8 / 21.8.1

SMALL-SIZED 8.4" VIDEO MONITORS WITH LED-BACKLIGHT ARE SPECIALLY DESIGNED FOR EXTREMELY HARSH ENVIRONMENTS. THE PRODUCT RETAINS ITS CHARACTERISTICS IN A WIDE RANGE OF TEMPERATURES, VIBRATION AND SHOCK LOADS.



MODEL	VMCM-21.8	VMCM-21.8.1
MOUNTING OPTION	DAMPERS	
DISPLAY SIZE, (INCH)	8,4"	
RESOLUTION	640x480	1024x768
VIEWING ANGLE, °		
HORIZONTAL	±70	
VERTICAL	±70	
CONTRAST	500:1	
BRIGHTNESS, cd/m²	500	
TOUCH SCREEN	(OPTIONAL)	
INTERFACE	VGA	VGA, COMPOSITE VIDEO (MONOCHROME SIGNAL)
POWER SUPPLY, V	+27	
POWER CONSUMPTION, W	15	
DIMENSIONS, mm:		
WIDTH	210	210
HEIGHT	179	179
DEPTH	90	94
WEIGHT, kg	2,6	
TEMPERATURE, °C:		
OPERATING	-40...+55	
STORAGE	-50...+70	
HUMIDITY	98%, 35 °C	
VIBRATION	1...500 Hz, 5g	
SHOCKS:		
SINGLE	100g	
REPEATED	15g	



# VMCM-21.7

10.4" VIDEO MONITOR WITH LED BACKLIGHT IS DESIGNED FOR DISPLAYING OF VIDEO INFORMATION RECEIVED VIA ANALOG VGA INPUT FROM AN ELECTRONIC DEVICE THAT GENERATES A VIDEO SIGNAL. THE VIDEO MONITOR IS DESIGNED FOR OPERATION IN HARSH ENVIRONMENTS, ON GROUND ARMY VEHICLES AND INSIDE NAVAL VESSELS.



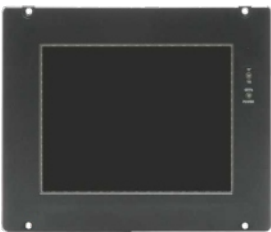
MODEL	VMCM-21.7
MOUNTING OPTION	FLANGE
DISPLAY SIZE, (INCH)	10,4"
RESOLUTION	640x480
VIEWING ANGLE, °	
HORIZONTAL	±70
VERTICAL	±70
CONTRAST	300:1
BRIGHTNESS, cd/m²	750
TOUCH SCREEN	+
INTERFACE	VGA, RS-232   USB - TOUCH CONTROL
POWER SUPPLY, V	+27
POWER CONSUMPTION, W	12
DIMENSIONS, mm:	
WIDTH	294
HEIGHT	248
DEPTH	78
WEIGHT, kg	5
TEMPERATURE, °C:	
OPERATING	-40...+55
STORAGE	-40...+70
HUMIDITY	98%, 35 °C
VIBRATION	1...200 Hz, 2g
SHOCKS:	
SINGLE	50g
REPEATED	15g

CUSTOMIZED OPTIONS ARE PROVIDED UPON REQUEST



# VMC-21M

SMALL-SIZED 8.4" VIDEO MONITOR WITH TOUCH CONTROL IS USED IN HARSH ENVIRONMENTS, INSIDE NAVAL VESSELS.



MODEL	VMC-21M
MOUNTING OPTION	FLANGE
DISPLAY SIZE, (INCH)	8,4"
RESOLUTION	640x480
VIEWING ANGLE, °	
HORIZONTAL	±70
VERTICAL	±70
CONTRAST	250:1
BRIGHTNESS, cd/m²	300
TOUCH SCREEN	+
INTERFACE	VGA, RS-232   USB - TOUCH CONTROL
POWER SUPPLY, V	+27
POWER CONSUMPTION, W	12
DIMENSIONS, mm:	
WIDTH	250
HEIGHT	205
DEPTH	96
WEIGHT, kg	4
TEMPERATURE, °C:	
OPERATING	-40...+55
STORAGE	-50...+70
HUMIDITY	98%, 35 °C
VIBRATION	1...200 Hz, 2g
SHOCKS:	
SINGLE	50g
REPEATED	15g



# VMCM-21.3 /21.3.1 VMCM-21.2.1

10.4" AND 12.1" VIDEO MONITORS WITH LED BACKLIGHT ARE DESIGNED FOR DISPLAYING OF VIDEO INFORMATION RECEIVED VIA ANALOG VGA INPUT FROM AN ELECTRONIC DEVICE THAT GENERATES A VIDEO SIGNAL. THE VIDEO MONITORS ARE DESIGNED FOR OPERATION IN HARSH ENVIRONMENTS, ON GROUND ARMY VEHICLES AND INSIDE NAVAL VESSELS.



MODEL	VMCM-21.3	VMCM-21.3.1	VMCM-21.2.1
MOUNTING OPTION	DAMPERS		
DISPLAY SIZE, (INCH)	12,1"		10,4"
RESOLUTION	1024x768	800x600	640x480
VIEWING ANGLE, °			
HORIZONTAL	±70		
VERTICAL	±70		
CONTRAST	350:1		500:1
BRIGHTNESS, cd/m²	300		250
TOUCH SCREEN	(OPTIONAL)		
INTERFACE	VGA		
POWER SUPPLY, V	+27		
POWER CONSUMPTION, W	12		18
DIMENSIONS, mm:			
WIDTH	350	350	
HEIGHT	268	268	
DEPTH	91	93	
WEIGHT, kg	5		
TEMPERATURE, °C:			
OPERATING	-20...+55	-40...+55	-40...+55
STORAGE	-40...+70	-40...+70	-50...+70
HUMIDITY	98%, 35 °C		
VIBRATION	1...500 Hz, 5g	1...500 Hz, 6g	
SHOCKS:			
SINGLE	150g		
REPEATED	15g		

CUSTOMIZED OPTIONS ARE PROVIDED UPON REQUEST



# VMC-26.1

10.4" VIDEO MONITOR IS DESIGNED FOR DISPLAYING OF INFORMATION ON THE SCREEN, AS WELL AS FOR FORMING AND DISPLAYING THE AIMING MARK.



MODEL	VMC-26.1
MOUNTING OPTION	FLANGE
DISPLAY SIZE, (INCH)	10,4"
RESOLUTION	1024x768
VIEWING ANGLE, °	
HORIZONTAL	±70
VERTICAL	±70
CONTRAST	250:1
BRIGHTNESS, cd/m²	300
TOUCH SCREEN	(OPTIONAL)
INTERFACE	VGA, COMPOSITE VIDEO (MONOCHROME SIGNAL)
POWER SUPPLY, V	+27
POWER CONSUMPTION, W	12
DIMENSIONS, mm:	
WIDTH	294
HEIGHT	224
DEPTH	79,5
WEIGHT, kg	5
TEMPERATURE, °C:	
OPERATING	-40...+55
STORAGE	-50...+70
HUMIDITY	98%, 35 °C
VIBRATION	1...200 Hz, 2g
SHOCKS:	
SINGLE	50g
REPEATED	15g





DAMPERS

FLANGE

# VMC-38 /38.2

# VMC-38.3 /38.4

A UNIFIED LINE OF 15" VIDEO MONITORS WITH LED BACKLIGHT IS DESIGNED FOR OPERATION IN HARSH ENVIRONMENTS. VIDEO MONITORS ARE DESIGNED IN DIFFERENT MOUNTING OPTIONS AND SUPPLY VOLTAGE. THEY OPERATE WITH RGB OUTPUT SIGNAL. VIDEO MONITOR VM-150TS IS ADDITIONALLY EQUIPPED WITH A TOUCH PANEL WITH INFORMATION EXCHANGE VIA RS-232 INTERFACE.



MODEL	VMC-38	VMC-38.2	VMC-38.3	VMC-38.4
MOUNTING OPTION	DAMPERS		FLANGE	
DISPLAY SIZE, (INCH)	15"			
RESOLUTION	1024x768			
VIEWING ANGLE, °				
HORIZONTAL	±85			
VERTICAL	±85			
CONTRAST	300:1			
BRIGHTNESS, cd/m²	350			
TOUCH SCREEN	(OPTIONAL)			
INTERFACE	VGA			
POWER SUPPLY, V	+27	~220, 50 Hz (400Hz)	+27	~220, 50 Hz (400Hz)
POWER CONSUMPTION, W	35			
DIMENSIONS, mm:				
WIDTH	387		387	
HEIGHT	308		308	
DEPTH	138		102	
WEIGHT, kg	9		7	
TEMPERATURE, °C:				
OPERATING	-40...+55			
STORAGE	-50...+70			
HUMIDITY	98%, 35 °C			
VIBRATION	1...500 Hz, 5g		1...200 Hz, 2g	
SHOCKS:				
SINGLE	75g			
REPEATED	15g			

CUSTOMIZED OPTIONS ARE PROVIDED UPON REQUEST

# VMC-38S

A UNIFIED LINE OF 15" VIDEO MONITORS WITH LED BACKLIGHT IS DESIGNED FOR OPERATION IN HARSH ENVIRONMENTS. VIDEO MONITORS ARE DESIGNED IN DIFFERENT MOUNTING OPTIONS AND SUPPLY VOLTAGE. THEY OPERATE WITH RGB OUTPUT SIGNAL. VIDEO MONITOR VMC-38S IS ADDITIONALLY EQUIPPED WITH A TOUCH PANEL WITH INFORMATION EXCHANGE VIA RS-232 INTERFACE.



MODEL	VMC-38S
MOUNTING OPTION	DAMPERS
DISPLAY SIZE, (INCH)	15"
RESOLUTION	1024x768
VIEWING ANGLE, °	
HORIZONTAL	±80
VERTICAL	±80
CONTRAST	300:1
BRIGHTNESS, cd/m²	350
TOUCH SCREEN	+
INTERFACE	VGA, RS-232 - TOUCH CONTROL (USB - OPTIONAL)
POWER SUPPLY, V	+27
POWER CONSUMPTION, W	35
DIMENSIONS, mm:	
WIDTH	387
HEIGHT	308
DEPTH	138
WEIGHT, kg	9
TEMPERATURE, °C:	
OPERATING	-40...+55
STORAGE	-50...+70
HUMIDITY	98%, 35 °C
VIBRATION	1...500 Hz, 5g
SHOCKS:	
SINGLE	75g
REPEATED	15g



DAMPERS

# VMC-45 /45.2

FLANGE

# VMC-45.4 /45.5

A UNIFIED LINE OF 19" VIDEO MONITORS WITH LED BACKLIGHT IS DESIGNED FOR OPERATION IN HARSH ENVIRONMENTS. VIDEO MONITORS ARE DESIGNED IN DIFFERENT MOUNTING OPTIONS AND SUPPLY VOLTAGE. THEY HAVE VGA INTERFACE.



DAMPERS



FLANGE



MODEL	VMC-45	VMC-45.2	VMC-45.4	VMC-45.5
MOUNTING OPTION	DAMPERS		FLANGE	
DISPLAY SIZE, (INCH)	19"			
RESOLUTION	1280x1024			
VIEWING ANGLE, °				
HORIZONTAL	±85			
VERTICAL	±85			
CONTRAST	400:1			
BRIGHTNESS, cd/m²	400			
TOUCH SCREEN	(OPTIONAL)			
INTERFACE	VGA			
POWER SUPPLY, V	+27	~220, 50 Hz (400Hz)		+27
POWER CONSUMPTION, W	35			
DIMENSIONS, mm:				
WIDTH	456			456
HEIGHT	371			371
DEPTH	138			100
WEIGHT, kg	13			11
TEMPERATURE, °C:				
OPERATING	-40...+55			-40...+55
STORAGE	-40...+70			-50...+70
HUMIDITY	98%, 35 °C			
VIBRATION	1...300 Hz, 5g / 300...2000 Hz, 3g		1...200 Hz, 2g	
SHOCKS:				
SINGLE	75g			30g
REPEATED	15g			15g

CUSTOMIZED OPTIONS ARE PROVIDED UPON REQUEST



DAMPERS

FLANGE

# VMC-51 /51.2

# VMC-51.3 /51.4

A UNIFIED LINE OF 20,1" VIDEO MONITORS WITH LED BACKLIGHT IS DESIGNED FOR OPERATION IN HARSH ENVIRONMENTS. THESE VIDEO MONITORS ARE DESIGNED IN DIFFERENT MOUNTING OPTIONS AND SUPPLY VOLTAGE AND OPERATE WITH RGB OUTPUT SIGNAL. FLANGE-MOUNT VARIANTS ARE INSTALLED IN A STANDARD 19" RACK.



DAMPERS



FLANGE

MODEL	VMC-51	VMC-51.2	VMC-51.3	VMC-51.4
MOUNTING OPTION	DAMPERS		FLANGE	
DISPLAY SIZE, (INCH)	20,1"			
RESOLUTION	1600x1200			
VIEWING ANGLE, °				
HORIZONTAL	±85			
VERTICAL	±85			
CONTRAST	350:1			
BRIGHTNESS, cd/m²	250			
TOUCH SCREEN	(OPTIONAL)			
INTERFACE	VGA			
POWER SUPPLY, V	+27	~220, 50 Hz (400Hz)	+27	~220, 50 Hz (400Hz)
POWER CONSUMPTION, W	55			
DIMENSIONS, mm:				
WIDTH	482		482	
HEIGHT	399		399	
DEPTH	132		85,5	
WEIGHT, kg	15		12	
TEMPERATURE, °C:				
OPERATING	-40...+55			
STORAGE	-40...+70			
HUMIDITY	98%, 35 °C			
VIBRATION	1...500 Hz, 5g		1...200 Hz, 2g	
SHOCKS:				
SINGLE	20g			
REPEATED	15g			



# VMC-51.3 /51.4 TT

A LINE OF 21.3" VIDEO MONITORS WITH LED BACKLIGHT AND VGA, DVI INTERFACES.



MODEL	VMC-51.3 TT	VMC-51.4 TT
MOUNTING OPTION	FLANGE	
DISPLAY SIZE, (INCH)	21,3"	
RESOLUTION	1600x1200	
VIEWING ANGLE, °		
HORIZONTAL	±80	
VERTICAL	±80	
CONTRAST	350:1	
BRIGHTNESS, cd/m <sup>2</sup>	300	
TOUCH SCREEN	(OPTIONAL)	
INTERFACE	VGA, DVI	
POWER SUPPLY, V	+27	~220, 50 Hz (400Hz)
POWER CONSUMPTION, W	55	
DIMENSIONS, mm:		
WIDTH	482	482
HEIGHT	400	400
DEPTH	100	89
WEIGHT, kg	12	13,5
TEMPERATURE, °C:		
OPERATING	-40...+55	
STORAGE	-40...+70	
HUMIDITY	98%, 35 °C	
VIBRATION	1...200 Hz, 2g	
SHOCKS:		
SINGLE	20g	
REPEATED	15g	

CUSTOMIZED OPTIONS ARE PROVIDED UPON REQUEST



# VMC-51M

# VMC-51.2M

# VMC-51.2.1M

20,1" VIDEO MONITORS WITH LED BACKLIGHT ARE DESIGNED FOR LESS SEVERE CLIMATIC CONDITIONS (MINUS 20 °C).



MODEL	VMC-51M	VMC-51.2M	VMC-51.2.1M
MOUNTING OPTION	FLANGE		
DISPLAY SIZE, (INCH)	20,1"		
RESOLUTION	1600x1200		
VIEWING ANGLE, °			
HORIZONTAL	±85		
VERTICAL	±85		
CONTRAST	350:1		
BRIGHTNESS, cd/m²	250		
TOUCH SCREEN	(OPTIONAL)		
INTERFACE	VGA, COMPOSITE IN/OUT		VGA, DVI
POWER SUPPLY, V	+27	~220, 50 Hz (400Hz)	
POWER CONSUMPTION, W	55		
DIMENSIONS, mm:			
WIDTH	482		
HEIGHT	399		
DEPTH	85,5		
WEIGHT, kg	12		
TEMPERATURE, °C:			
OPERATING	-20...+55		
STORAGE	-40...+70		
HUMIDITY	98%, 35 °C		
VIBRATION	1...200 Hz, 2g		
SHOCKS:			
SINGLE	30g		
REPEATED	15g		





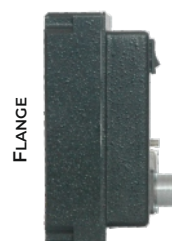
DAMPERS

FLANGE

# VMC-17

# VMC-17.3

FULLHD 7" WIDESCREEN VIDEO MONITORS WITH LED BACKLIGHT ARE DESIGNED IN DIFFERENT VERSIONS - WITH AND WITHOUT SHOCK ABSORBERS (FLANGE MOUNTING).



DAMPERS

FLANGE

MODEL	VMC-17	VMC-17.3
MOUNTING OPTION	DAMPERS	FLANGE
DISPLAY SIZE, (INCH)	7"	
RESOLUTION	1920x1080	
VIEWING ANGLE, °	±85	
	±85	
CONTRAST	300:1	
BRIGHTNESS, cd/m²	250	
TOUCH SCREEN	(OPTIONAL)	
INTERFACE	DVI	
POWER SUPPLY, V	+27 or ~220 (50Hz, 400Hz FROM REMOTE AC ADAPTER, OPTIONAL)	
POWER CONSUMPTION, W	15	
DIMENSIONS, mm:		
	WIDTH	193
	HEIGHT	135
	DEPTH	76
WEIGHT, kg	2,2	1,6
TEMPERATURE, °C:		
	OPERATING	-50...+55
	STORAGE	-60...+85
HUMIDITY	98%, 35 °C	
VIBRATION	1...500 Hz, 5g	1...200 Hz, 2g
SHOCKS:		
	SINGLE	150g
	REPEATED	15g

CUSTOMIZED OPTIONS ARE PROVIDED UPON REQUEST



# VMC-22.3

HD 10.1" WIDESCREEN VIDEO MONITOR WITH LED BACKLIGHT AND DVI INTERFACE.



MODEL	VMC-22.3
MOUNTING OPTION	FLANGE
DISPLAY SIZE, (INCH)	10,1"
RESOLUTION	1280x800
VIEWING ANGLE, °	
HORIZONTAL	±85
VERTICAL	±85
CONTRAST	300:1
BRIGHTNESS, cd/m <sup>2</sup>	250
TOUCH SCREEN	(OPTIONAL)
INTERFACE	DVI
POWER SUPPLY, V	+27 OR ~220 (50HZ, 400HZ FROM REMOTE AC ADAPTER, OPTIONAL)
POWER CONSUMPTION, W	12
DIMENSIONS, mm:	
WIDTH	280
HEIGHT	204
DEPTH	80
WEIGHT, kg	3,5
TEMPERATURE, °C:	
OPERATING	-50...+55
STORAGE	-60...+85
HUMIDITY	98%, 35 °C
VIBRATION	1...200 Hz, 2g
SHOCKS:	
SINGLE	50g
REPEATED	15g



DAMPERS

FLANGE

# VMC-31

# VMC-31.3

**12.1" WIDESCREEN VIDEO MONITORS WITH LED BACKLIGHT ARE DESIGNED IN DIFFERENT VERSIONS - WITH AND WITHOUT SHOCK ABSORBERS (FLANGE MOUNTING).**



DAMPERS

FLANGE



MODEL	VMC-31	VMC-31.3
MOUNTING OPTION	DAMPERS	FLANGE
DISPLAY SIZE, (INCH)	12,1"	
RESOLUTION	1280x800	
VIEWING ANGLE, °		
HORIZONTAL	±85	
VERTICAL	±85	
CONTRAST	300:1	
BRIGHTNESS, cd/m <sup>2</sup>	250	
TOUCH SCREEN	(OPTIONAL)	
INTERFACE	DVI	
POWER SUPPLY, V	+27 OR ~220 (50Hz, 400Hz FROM REMOTE AC ADAPTER, OPTIONAL)	
POWER CONSUMPTION, W	25	
DIMENSIONS, mm:		
WIDTH	334	334
HEIGHT	245	245
DEPTH	118	117,4
WEIGHT, kg	4,8	4,5
TEMPERATURE, °C:		
OPERATING	-50...+55	
STORAGE	-60...+85	
HUMIDITY	98%, 35 °C	
VIBRATION	1...500 Hz, 5g	1...200 Hz, 2g
SHOCKS:		
SINGLE	50g	30g
REPEATED	15g	15g

CUSTOMIZED OPTIONS ARE PROVIDED UPON REQUEST



DAMPERS

# VMC-39 / 39.2

FLANGE

# VMC-39.3 / 39.4

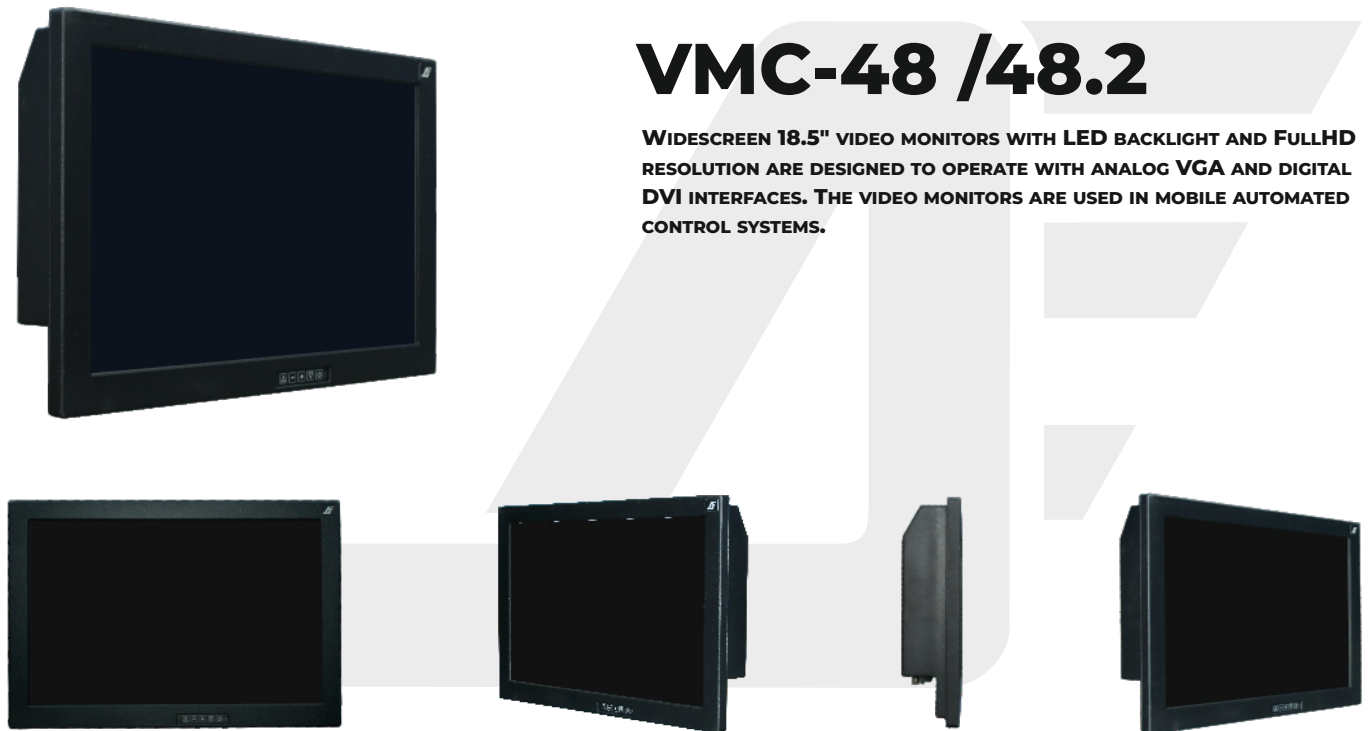
**15.6" WIDESCREEN VIDEO MONITORS WITH LED BACKLIGHT HAVE DIFFERENT MOUNTING OPTIONS AND SUPPLY VOLTAGE. THE VIDEO MONITORS HAVE DVI INTERFACE.**



DAMPERS

FLANGE

MODEL	VMC-39	VMC-39.2	VMC-39.3	VMC-39.4
MOUNTING OPTION	DAMPERS		FLANGE	
DISPLAY SIZE, (INCH)	15,6"			
RESOLUTION	1920x1080			
VIEWING ANGLE, °				
HORIZONTAL	±85			
VERTICAL	±85			
CONTRAST	300:1			
BRIGHTNESS, cd/m²	250			
TOUCH SCREEN	(OPTIONAL)			
INTERFACE	DVI			
POWER SUPPLY, V	+27	~220, 50 Hz (400Hz)	+27	~220, 50 Hz (400Hz)
POWER CONSUMPTION, W	35			
DIMENSIONS, mm:				
WIDTH	427		427	
HEIGHT	270		270	
DEPTH	127		96	
WEIGHT, kg	8		6,2	
TEMPERATURE, °C:				
OPERATING	-50...+55			
STORAGE	-60...+85			
HUMIDITY	98%, 35 °C			
VIBRATION	1...500 Hz, 5g		1...200 Hz, 2g	
SHOCKS:				
SINGLE	50g		30g	
REPEATED	15g		15g	



# VMC-48 /48.2

WIDESCREEN 18.5" VIDEO MONITORS WITH LED BACKLIGHT AND FULLHD RESOLUTION ARE DESIGNED TO OPERATE WITH ANALOG VGA AND DIGITAL DVI INTERFACES. THE VIDEO MONITORS ARE USED IN MOBILE AUTOMATED CONTROL SYSTEMS.

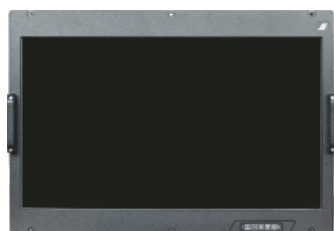
MODEL	VMC-48	VMC-48.2
MOUNTING OPTION	FLANGE	
DISPLAY SIZE, (INCH)	18,5"	
RESOLUTION	1920x1080	
VIEWING ANGLE, °		
HORIZONTAL	±85	
VERTICAL	±85	
CONTRAST	400:1	
BRIGHTNESS, cd/m²	250	
TOUCH SCREEN	(OPTIONAL)	
INTERFACE	VGA, DVI, DISPLAY PORT.	
POWER SUPPLY, V	+27	~220, 50 Hz (400Hz)
POWER CONSUMPTION, W	40	
DIMENSIONS, mm:		
WIDTH	470	
HEIGHT	320	
DEPTH	82	
WEIGHT, kg	7	
TEMPERATURE, °C:		
OPERATING	-40...+55	
STORAGE	-50...+70	
HUMIDITY	98%, 25 °C	
VIBRATION	1...200 Hz, 2g	
SHOCKS:		
SINGLE	-	
REPEATED	10g	

CUSTOMIZED OPTIONS ARE PROVIDED UPON REQUEST



# VMC-61 / 61.2

24" WIDESCREEN VIDEO MONITORS WITH LED BACKLIGHT HAVE STANDARD FULLHD RESOLUTION.



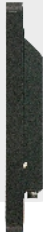
MODEL	VMC-61	VMC-61.2
MOUNTING OPTION	DAMPERS	
DISPLAY SIZE, (INCH)	24"	
RESOLUTION	1920x1080	
VIEWING ANGLE, °		
HORIZONTAL	±85	
VERTICAL	±85	
CONTRAST	300:1	
BRIGHTNESS, cd/m²	250	
TOUCH SCREEN	(OPTIONAL)	
INTERFACE	VGA, DVI	
POWER SUPPLY, V	+27	~220, 50 Hz (400Hz)
POWER CONSUMPTION, W	95	55
DIMENSIONS, mm:		
WIDTH	580	
HEIGHT	399	
DEPTH	110	
WEIGHT, kg	14	
TEMPERATURE, °C:		
OPERATING	-40...+50	
STORAGE	-50...+70	
HUMIDITY	98%, 35 °C	
VIBRATION	1...500 Hz, 5g	
SHOCKS:		
SINGLE	50g	
REPEATED	15g	





# VMC-61.3

24" VIDEO MONITOR WITH 1920x1080 RESOLUTION IS DESIGNED FOR OPERATION WITH A MOTORIZED ELEVATOR. IT HAS VESA MOUNT. IT CAN BE MOUNTED ONTO A TABLE OR ONTO A HANGING BRACKET.



MODEL	VMC-61.3
MOUNTING OPTION	VESA 100x100
DISPLAY SIZE, (INCH)	24"
RESOLUTION	1920x1080
VIEWING ANGLE, °	
HORIZONTAL	±85
VERTICAL	±85
CONTRAST	1000:1
BRIGHTNESS, cd/m²	250
TOUCH SCREEN	+
INTERFACE	VGA, DVI, RS-232   USB - TOUCH CONTROL
POWER SUPPLY, V	+27
POWER CONSUMPTION, W	55
DIMENSIONS, mm:	
WIDTH	584
HEIGHT	376
DEPTH	62
WEIGHT, kg	8,3
TEMPERATURE, °C:	
OPERATING	0...+50
STORAGE	-50...+50
HUMIDITY	98%, 25 °C
VIBRATION	NOT STANDARDIZED
SHOCKS:	
SINGLE	-
REPEATED	-

CUSTOMIZED OPTIONS ARE PROVIDED UPON REQUEST



# VMC-61.4

**24" VIDEO MONITOR WITH 1920x1080 RESOLUTION. MAINTAINS ITS CHARACTERISTICS OVER A WIDE RANGE OF TEMPERATURES, VIBRATION AND SHOCK LOADS. READY TIME AT MINUS 50 °C - 8 MINUTES.**

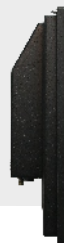


MODEL	VMC-61.4
MOUNTING OPTION	FLANGE
DISPLAY SIZE, (INCH)	24"
RESOLUTION	1920x1080
VIEWING ANGLE, °	
HORIZONTAL	±85
VERTICAL	±85
CONTRAST	400:1
BRIGHTNESS, cd/m <sup>2</sup>	250
TOUCH SCREEN	(OPTIONAL)
INTERFACE	VGA, DVI
POWER SUPPLY, V	+27
POWER CONSUMPTION, W	55
DIMENSIONS, mm:	
WIDTH	590
HEIGHT	370
DEPTH	115,5
WEIGHT, kg	15
TEMPERATURE, °C:	
OPERATING	-50...+55
STORAGE	-65...+65
HUMIDITY	98%, 35 °C
VIBRATION	1...200 Hz, 2g
SHOCKS:	
SINGLE	20g
REPEATED	10g



# VMC-61.2 TT

24" WIDESCREEN VIDEO MONITOR WITH TOUCH PANEL IS DESIGNED FOR INSTALLATION INTO A PANEL OR ON A TABLE WITH A STAND.



MODEL	VMC-61.2 TT
MOUNTING OPTION	FLANGE
DISPLAY SIZE, (INCH)	24"
RESOLUTION	1920x1080
VIEWING ANGLE, °	
HORIZONTAL	±85
VERTICAL	±85
CONTRAST	300:1
BRIGHTNESS, cd/m <sup>2</sup>	250
TOUCH SCREEN	+
INTERFACE	VGA, DVI, RS-232   USB - TOUCH CONTROL
POWER SUPPLY, V	~220, 50 Hz
POWER CONSUMPTION, W	55
DIMENSIONS, mm:	
WIDTH	590
HEIGHT	370
DEPTH	92
WEIGHT, kg	10
TEMPERATURE, °C:	
OPERATING	-10...+40
STORAGE	-40...+65
HUMIDITY	98%, 25 °C
VIBRATION	1...200 Hz, 2g
SHOCKS:	
SINGLE	-
REPEATED	10g

CUSTOMIZED OPTIONS ARE PROVIDED UPON REQUEST



VESA 100x100

FLANGE

DAMPERS

# VMC-68.2

# VMC-68.2.1

# VMC-68.2.2

**WIDESCREEN 27" VIDEO MONITORS WITH LED BACKLIGHT AND FULLHD RESOLUTION ARE DESIGNED TO DISPLAY INFORMATION IN AUTOMATED CONTROL SYSTEMS, CONTROL ROOMS AND COMMAND POSTS, AS WELL AS AS INDEPENDENT DEVICES.**



VESA 100x100



FLANGE



DAMPERS



MODEL	VMC-68.2	VMC-68.2.1	VMC-68.2.2
MOUNTING OPTION	VESA 100x100	FLANGE	DAMPERS
DISPLAY SIZE, (INCH)	27"		
RESOLUTION	1920x1080		
VIEWING ANGLE, °			
HORIZONTAL	±89		
VERTICAL	±89		
CONTRAST	1000:1		
BRIGHTNESS, cd/m²	250		
TOUCH SCREEN	(OPTIONAL)		
INTERFACE	VGA, DVI	VGA, HDMI	
POWER SUPPLY, V	+27 OR ~220 (50HZ FROM REMOTE AC ADAPTER, OPTIONAL)		
POWER CONSUMPTION, W	60		
DIMENSIONS, mm:			
WIDTH	658	665	665
HEIGHT	421	420	420
DEPTH	74	75,5	100
WEIGHT, kg	10	13,9	15
TEMPERATURE, °C:			
OPERATING	-10...+50		
STORAGE	-40...+50		
HUMIDITY	98%, 25 °C		
VIBRATION	NOT STANDARDIZED	1...200 Hz, 2g	1...500 Hz, 3g
SHOCKS:			
SINGLE	-	-	30g
REPEATED	-	10g	15g



**WIDESCREEN 32" VIDEO MONITORS WITH LED BACKLIGHT AND FULLHD RESOLUTION ARE DESIGNED TO DISPLAY INFORMATION IN AUTOMATED CONTROL SYSTEMS, CONTROL ROOMS AND COMMAND POSTS, AS WELL AS AS INDEPENDENT DEVICES.**

MODEL	VMC-81.2	VMC-81.2.1	VMC-81.2.2
MOUNTING OPTION	VESA 100x100	FLANGE	DAMPERS
DISPLAY SIZE, (INCH)	32"		
RESOLUTION	1920x1080		
VIEWING ANGLE, °			
HORIZONTAL	±85		
VERTICAL	±85		
CONTRAST	1000:1		
BRIGHTNESS, cd/m²	250		
TOUCH SCREEN	(OPTIONAL)		
INTERFACE	VGA, HDMI		
POWER SUPPLY, V	+27 OR ~220 (50HZ FROM REMOTE AC ADAPTER, OPTIONAL)		
POWER CONSUMPTION, W	70		
DIMENSIONS, mm:			
WIDTH	768	768	768
HEIGHT	485	490	490
DEPTH	74	83	107
WEIGHT, kg	13,5	18,5	19,7
TEMPERATURE, °C:			
OPERATING	-10...+50		
STORAGE	-40...+50		
HUMIDITY	98%, 25 °C		
VIBRATION	NOT STANDARDIZED	1...200 Hz, 2g	1...500 Hz, 3g
SHOCKS:			
SINGLE	-	-	30g
REPEATED	-	10g	15g

**CUSTOMIZED OPTIONS ARE PROVIDED UPON REQUEST**



# VMC-81.3

**WIDESCREEN 32" VIDEO MONITORS WITH LED BACKLIGHT AND FULLHD RESOLUTION ARE DESIGNED TO DISPLAY INFORMATION IN AUTOMATED CONTROL SYSTEMS, CONTROL ROOMS AND COMMAND POSTS, AS WELL AS AS INDEPENDENT DEVICES.**



MODEL	VMC-81.3
MOUNTING OPTION	VESA 100x100, VESA 200x200
DISPLAY SIZE, (INCH)	32"
RESOLUTION	3840x2160
VIEWING ANGLE, °	
HORIZONTAL	±85
VERTICAL	±85
CONTRAST	700:1
BRIGHTNESS, cd/m <sup>2</sup>	250
TOUCH SCREEN	(OPTIONAL)
INTERFACE	HDMI - 2 PCS.
POWER SUPPLY, V	+27 OR ~220 (50Hz FROM REMOTE AC ADAPTER, OPTIONAL)
POWER CONSUMPTION, W	80
DIMENSIONS, mm:	
WIDTH	761
HEIGHT	475
DEPTH	69
WEIGHT, kg	15
TEMPERATURE, °C:	
OPERATING	0...+50
STORAGE	-50...+50
HUMIDITY	98%, 25 °C
VIBRATION	NOT STANDARDIZED
SHOCKS:	
SINGLE	-
REPEATED	-





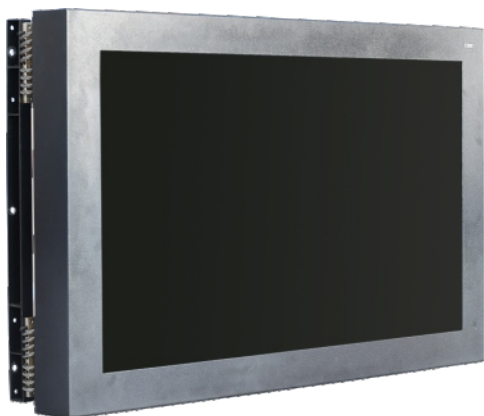
# VMC-81.4.1

**WIDESCREEN 32" VIDEO MONITORS WITH LED BACKLIGHT AND FULLHD RESOLUTION ARE DESIGNED TO DISPLAY INFORMATION IN AUTOMATED CONTROL SYSTEMS, CONTROL ROOMS AND COMMAND POSTS, AS WELL AS AS INDEPENDENT DEVICES.**



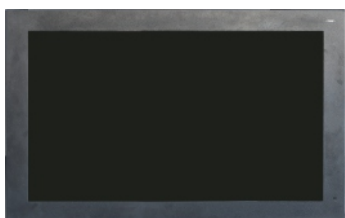
MODEL	VMC-81.4.1
MOUNTING OPTION	FLANGE
DISPLAY SIZE, (INCH)	32"
RESOLUTION	3840x2160
VIEWING ANGLE, °	
HORIZONTAL	±85
VERTICAL	±85
CONTRAST	700:1
BRIGHTNESS, cd/m <sup>2</sup>	200
TOUCH SCREEN	(OPTIONAL)
INTERFACE	DISPLAY PORT, HDMI
POWER SUPPLY, V	+27 OR ~220 (50HZ FROM REMOTE AC ADAPTER, OPTIONAL)
POWER CONSUMPTION, W	150
DIMENSIONS, mm:	
WIDTH	786
HEIGHT	490
DEPTH	87
WEIGHT, kg	19
TEMPERATURE, °C:	
OPERATING	0...+40
STORAGE	-40...+65
HUMIDITY	98%, 25 °C
VIBRATION	1...200 Hz, 2g
SHOCKS:	
SINGLE	-
REPEATED	10g

**CUSTOMIZED OPTIONS ARE PROVIDED UPON REQUEST**



# VMC-101

**WIDESCREEN 46" VIDEO MONITOR WITH LED BACKLIGHT IS AN IDEAL SOLUTION FOR DISPLAYING OF INFORMATION IN COMMAND POSTS.**



MODEL	VMC-101
MOUNTING OPTION	DAMPERS
DISPLAY SIZE, (INCH)	46"
RESOLUTION	1920X1080
VIEWING ANGLE, °	
HORIZONTAL	±85
VERTICAL	±85
CONTRAST	400:1
BRIGHTNESS, cd/m <sup>2</sup>	250
TOUCH SCREEN	(OPTIONAL)
INTERFACE	VGA, COMPOSITE VIDEO ( TV SIGNAL)
POWER SUPPLY, V	~220, 50 Hz
POWER CONSUMPTION, W	390
DIMENSIONS, mm:	
WIDTH	1180
HEIGHT	725
DEPTH	190
WEIGHT, kg	58
TEMPERATURE, °C:	
OPERATING	-10...+50
STORAGE	-40...+65
HUMIDITY	98%, 25 °C
VIBRATION	1...300 Hz, 2g
SHOCKS:	
SINGLE	-
REPEATED	10g



# VMC-140.2 /140.4

ULTRA HD 55" VIDEO MONITORS ARE DESIGNED TO DISPLAY INFORMATION IN AUTOMATED CONTROL SYSTEMS, CONTROL ROOMS AND COMMAND POSTS, AS WELL AS AS INDEPENDENT DEVICES.



MODEL	VMC-140.2	VMC-140.4
MOUNTING OPTION	DAMPERS	
DISPLAY SIZE, (INCH)	55"	
RESOLUTION	1920x1080	3840x2160
VIEWING ANGLE, °	±85	
HORIZONTAL		
VERTICAL		
CONTRAST	700:1	1000:1
BRIGHTNESS, cd/m <sup>2</sup>	250	400
TOUCH SCREEN	(OPTIONAL)	
INTERFACE	HDMI - 2 PCS.	HDMI, DISPLAYPORT
POWER SUPPLY, V	~220, 50 Hz	
POWER CONSUMPTION, W	270	290
DIMENSIONS, mm:		
WIDTH		
HEIGHT		
DEPTH		
WEIGHT, kg	65	60
TEMPERATURE, °C:		
OPERATING		
STORAGE		
HUMIDITY	98%, 25 °C	
VIBRATION	1...200 Hz, 2g	1...500 Hz, 2g
SHOCKS:		
SINGLE		
REPEATED		

CUSTOMIZED OPTIONS ARE PROVIDED UPON REQUEST



# VMC-165.2

ULTRA HD 65" VIDEO MONITOR IS DESIGNED TO DISPLAY INFORMATION IN AUTOMATED CONTROL SYSTEMS, CONTROL ROOMS AND COMMAND POSTS, AS WELL AS AS INDEPENDENT DEVICE.



MODEL	VMC-165.2
MOUNTING OPTION	DAMPERS
DISPLAY SIZE, (INCH)	65"
RESOLUTION	3840x2160
VIEWING ANGLE, °	
HORIZONTAL	±85
VERTICAL	±85
CONTRAST	1000:1
BRIGHTNESS, cd/m <sup>2</sup>	400
TOUCH SCREEN	(OPTIONAL)
INTERFACE	HDMI, DISPLAYPORT
POWER SUPPLY, V	~220, 50 Hz
POWER CONSUMPTION, W	360
DIMENSIONS, mm:	
WIDTH	1543
HEIGHT	918
DEPTH	220
WEIGHT, kg	80
TEMPERATURE, °C:	
OPERATING	0...+40
STORAGE	-40...+65
HUMIDITY	98%, 25 °C
VIBRATION	1...500 Hz, 2g
SHOCKS:	
SINGLE	30g
REPEATED	15g



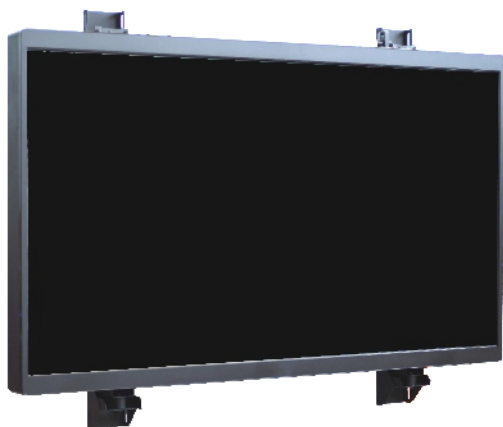
# VMC-190.2

ULTRA HD 75" VIDEO MONITOR IS DESIGNED TO DISPLAY INFORMATION IN AUTOMATED CONTROL SYSTEMS, CONTROL ROOMS AND COMMAND POSTS, AS WELL AS AS INDEPENDENT DEVICE.



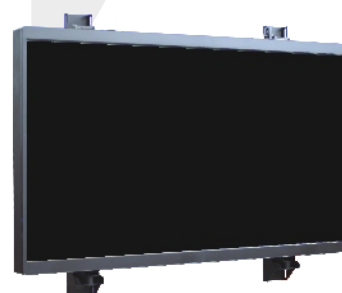
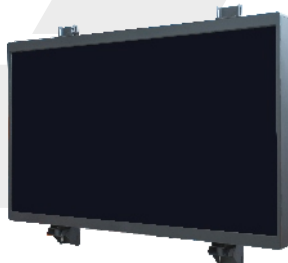
MODEL	VMC-190.2
MOUNTING OPTION	DAMPERS
DISPLAY SIZE, (INCH)	75"
RESOLUTION	3840x2160
VIEWING ANGLE, °	
HORIZONTAL	±85
VERTICAL	±85
CONTRAST	1000:1
BRIGHTNESS, cd/m²	400
TOUCH SCREEN	(OPTIONAL)
INTERFACE	HDMI, DISPLAYPORT
POWER SUPPLY, V	~220, 50 Hz
POWER CONSUMPTION, W	500
DIMENSIONS, mm:	
WIDTH	1764
HEIGHT	1048
DEPTH	220
WEIGHT, kg	100
TEMPERATURE, °C:	
OPERATING	0...+40
STORAGE	-40...+65
HUMIDITY	98%, 25 °C
VIBRATION	1...500 Hz, 2g
SHOCKS:	
SINGLE	30g
REPEATED	15g

CUSTOMIZED OPTIONS ARE PROVIDED UPON REQUEST

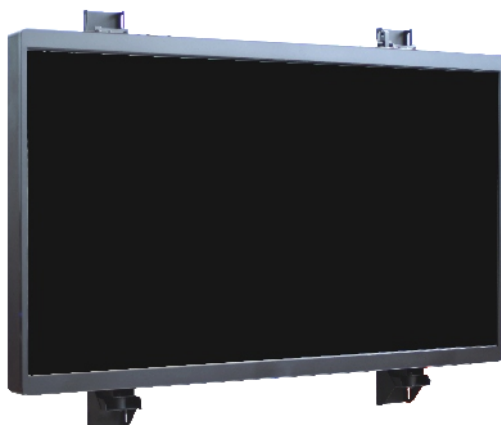


# VMC-250

ULTRA HD 98" VIDEO MONITORS ARE DESIGNED TO DISPLAY INFORMATION IN AUTOMATED CONTROL SYSTEMS, CONTROL ROOMS AND COMMAND POSTS, AS WELL AS AS INDEPENDENT DEVICES.

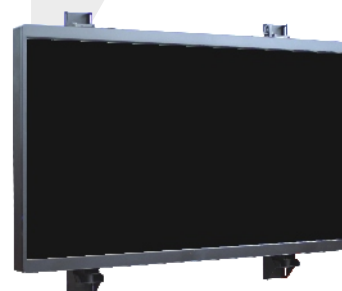


MODEL	VMC-250
MOUNTING OPTION	DAMPERS
DISPLAY SIZE, (INCH)	98"
RESOLUTION	3840x2160
VIEWING ANGLE, °	
HORIZONTAL	±85
VERTICAL	±85
CONTRAST	800:1
BRIGHTNESS, cd/m <sup>2</sup>	350
TOUCH SCREEN	+
INTERFACE	HDMIx2, RS-232
POWER SUPPLY, V	~220, 50 Hz
POWER CONSUMPTION, W	690
DIMENSIONS, mm:	
WIDTH	2216
HEIGHT	1615
DEPTH	258
WEIGHT, kg	250
TEMPERATURE, °C:	
OPERATING	-10...+50
STORAGE	-40...+50
HUMIDITY	98%, 25 °C
VIBRATION	1...300 Hz, 2g
SHOCKS:	
SINGLE	-
REPEATED	10g



# VMC-250 TT

ULTRA HD 98" VIDEO MONITORS ARE DESIGNED TO DISPLAY INFORMATION IN AUTOMATED CONTROL SYSTEMS, CONTROL ROOMS AND COMMAND POSTS, AS WELL AS AS INDEPENDENT DEVICES.



MODEL	VMC-250 TT
MOUNTING OPTION	DAMPERS
DISPLAY SIZE, (INCH)	98"
RESOLUTION	3840x2160
VIEWING ANGLE, °	
HORIZONTAL	±85
VERTICAL	±85
CONTRAST	800:1
BRIGHTNESS, cd/m <sup>2</sup>	400
TOUCH SCREEN	+
INTERFACE	HDMI x4, DISPLAYPORT x2, RGB, RS-232, ETHERNET
POWER SUPPLY, V	~220, 50 Hz
POWER CONSUMPTION, W	690
DIMENSIONS, mm:	
WIDTH	2216
HEIGHT	1366
DEPTH	155
WEIGHT, kg	230
TEMPERATURE, °C:	
OPERATING	-10...+50
STORAGE	-40...+50
HUMIDITY	98%, 25 °C
VIBRATION	1...300 Hz, 2g
SHOCKS:	
SINGLE	-
REPEATED	10g

CUSTOMIZED OPTIONS ARE PROVIDED UPON REQUEST



# VMCM-16

THE UNFRAMED 6.5" VIDEO MONITOR WITH LED BACKLIGHT IS DESIGNED FOR DISPLAYING VIDEO INFORMATION RECEIVED VIA ANALOG VGA INPUT FROM AN ELECTRONIC DEVICE USED IN MOBILE AUTOMATED CONTROL SYSTEMS.



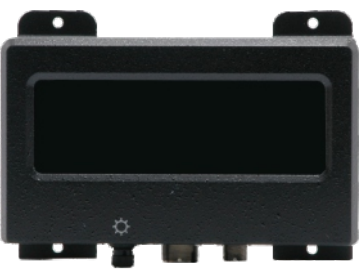
MODEL	VMCM-16
MOUNTING OPTION	FLANGE
DISPLAY SIZE, (INCH)	6,5"
RESOLUTION	1024x768
VIEWING ANGLE, °	
HORIZONTAL	±85
VERTICAL	±85
CONTRAST	300:1
BRIGHTNESS, cd/m²	300
TOUCH SCREEN	(OPTIONAL)
INTERFACE	VGA, DVI (OPTIONAL)
POWER SUPPLY, V	+12
POWER CONSUMPTION, W	15
DIMENSIONS, mm:	
WIDTH	207
HEIGHT	118
DEPTH	52,5
WEIGHT, kg	1
TEMPERATURE, °C:	
OPERATING	+5...+40
STORAGE	-40...+50
HUMIDITY	98%, 25 °C
VIBRATION	1...200 Hz, 2g
SHOCKS:	
SINGLE	-
REPEATED	15g





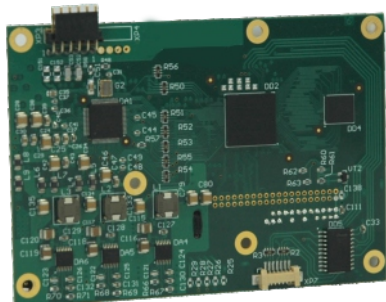
# BT-33-110

THE UNIT IS DESIGNED TO DISPLAY THE INFORMATION RECEIVED  
VIA RS-232.



MODEL	BT-33-110
MOUNTING OPTION	DAMPERS
DISPLAY SIZE, (INCH)	-
RESOLUTION	4 LINES (20 CHARACTERS PER LINE). DOTS IN A SIGN 5x7
VIEWING ANGLE, °	
HORIZONTAL	-
VERTICAL	-
CONTRAST	-
BRIGHTNESS, cd/m²	-
TOUCH SCREEN	-
INTERFACE	RS-232
POWER SUPPLY, V	+27
POWER CONSUMPTION, W	10
DIMENSIONS, mm:	
WIDTH	219
HEIGHT	159,9
DEPTH	80,5
WEIGHT, kg	3
TEMPERATURE, °C:	
OPERATING	-20...+55
STORAGE	-50...+85
HUMIDITY	98%, 35 °C
VIBRATION	1...500 Hz, 6g
SHOCKS:	
SINGLE	150g
REPEATED	20g

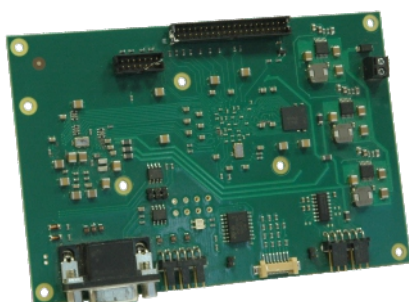
CUSTOMIZED OPTIONS ARE PROVIDED UPON REQUEST



## CONTROLLER BOARD VK-26

A HIGHLY INTEGRATED VIDEO CONTROLLER THAT ALLOWS YOU TO CONVERT ANALOG SIGNAL TO DIGITAL TTL OR LVDS FOR LCD PANELS CONNECTING.

RESOLUTION	600 TV LINES
INTERFACE	TV INPUT - 2 PCS. FULL BLACK AND WHITE TV SIGNAL
POWER SUPPLY, V	+3,3
DIMENSIONS, mm:	
WIDTH	115
HEIGHT	80
DEPTH	11,5
WEIGHT, kg	0,13
TEMPERATURE, °C:	
OPERATING	-50...+70
STORAGE	-60...+85



## CONTROLLER BOARD KI-07P

A HIGHLY INTEGRATED VIDEO CONTROLLER THAT ALLOWS YOU TO CONVERT ANALOG SIGNAL TO DIGITAL TTL OR LVDS FOR LCD PANELS CONNECTING.

RESOLUTION	600 TV LINES . (LCD PANEL RESOLUTION BY RGB, HDMI: 640x480, 800x600, 1024x768, 1280x1024, 1280x800, 1600x1200, 1920x1080)
INTERFACE	VGA INPUT, COMPOSITE INPUT, HDMI INPUT - 2 PCS.
POWER SUPPLY, V	+8....+13,2
DIMENSIONS, mm:	
WIDTH	135
HEIGHT	90
DEPTH	11,2
WEIGHT, kg	0,15
TEMPERATURE, °C:	
OPERATING	-40...+70
STORAGE	-50...+85
HUMIDITY	98%, 35 °C
VIBRATION	1...200 Hz, 2g
SHOCKS:	
SINGLE	50g
REPEATED	15g

CUSTOMIZED OPTIONS ARE PROVIDED UPON REQUEST





«DISPLAY» DESIGN OFFICE», JSC



210039, Republic of Belarus,  
Vitebsk, P. Brovki Str., 13 a



+375 212 26 40 01



info@kdisplay.com



kdisplay.com

